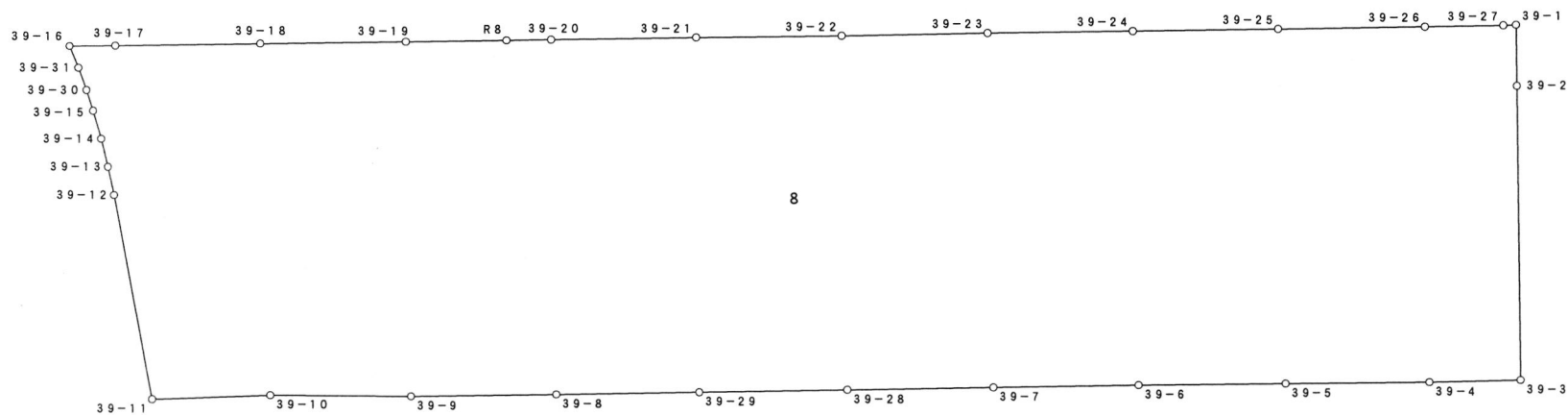
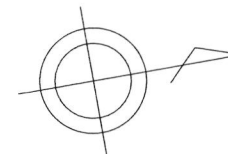


画地原子一覧表

2009/09/01

S=1:1000



参考資料

※記載内容は換地処分当時のものです。 上尾市

座標面積計算書

参考資料

※記載内容は換地処分当時のものです。 上尾市

地 番 8

点 名	[1] X座標	[2] Y座標	[3]	[4]	[2]*[3]	[1]*[4]	夾 角	方向角	距 離
39-1	-3278.174	-18946.638	0.411	8.558	-7787.068218	-28054.613092	88° 45' 35"	99° 01' 39"	8.425
39-2	-3279.496	-18938.317	-7.723	48.330	146260.622191	-158498.041680	179° 56' 16"	99° 05' 23"	40.517
39-3	-3285.897	-18898.308	-18.774	38.139	354796.834392	-125320.825683	90° 29' 43"	188° 35' 40"	12.513
39-4	-3298.270	-18900.178	-31.783	-5.076	600704.357374	16742.018520	179° 12' 56"	189° 22' 44"	19.673
39-5	-3317.680	-18903.384	-39.404	-6.474	744868.943136	21478.660320	180° 05' 46"	189° 16' 58"	20.259
39-6	-3337.674	-18906.652	-39.666	-6.386	749951.258232	21314.386164	180° 16' 35"	189° 00' 23"	19.917
39-7	-3357.346	-18909.770	-39.475	-6.251	746463.170750	20986.769846	180° 00' 58"	188° 59' 25"	20.049
39-28	-3377.149	-18912.903	-39.845	-6.286	753584.620035	21228.758614	180° 02' 59"	188° 56' 26"	20.288
39-29	-3397.191	-18916.056	-39.517	-6.220	747505.784952	21130.528020	179° 59' 27"	188° 56' 59"	19.715
39-8	-3416.666	-18919.123	-39.221	-6.199	742026.923183	21179.912534	179° 56' 13"	189° 00' 46"	19.992
39-9	-3436.412	-18922.255	-38.762	-6.575	733464.448310	22594.408900	178° 45' 00"	190° 15' 46"	19.325
39-10	-3455.428	-18925.698	-35.097	-5.651	664235.222706	19526.623628	182° 26' 41"	187° 49' 05"	16.231
39-11	-3471.509	-18927.906	-16.489	-30.793	312102.242034	106898.176637	98° 38' 09"	269° 10' 56"	28.588
39-12	-3471.917	-18956.491	-0.579	-32.600	10975.808289	113184.494200	181° 37' 16"	267° 33' 40"	4.018
39-13	-3472.088	-18960.506	-0.438	-7.994	8304.701628	27755.871472	181° 24' 00"	266° 09' 40"	3.988
39-14	-3472.355	-18964.485	-0.705	-7.980	13369.961925	27709.392900	182° 24' 31"	263° 45' 09"	4.024
39-15	-3472.793	-18968.486	-0.863	-6.979	16369.803418	24236.622347	181° 52' 28"	261° 52' 41"	3.008
39-30	-3473.218	-18971.464	-0.990	-6.192	18781.749360	21506.165856	181° 50' 54"	260° 01' 47"	3.263
39-31	-3473.783	-18974.678	-1.239	-6.390	23509.626042	22197.473370	182° 00' 40"	258° 01' 07"	3.246
39-16	-3474.457	-18977.854	5.562	-2.140	-105554.823948	7435.337980	68° 35' 10"	9° 25' 57"	6.321
39-17	-3468.221	-18976.818	25.991	4.142	-493226.476638	-14365.371382	180° 29' 50"	8° 56' 07"	19.997
39-18	-3448.466	-18973.712	39.484	6.253	-749158.044608	-21563.257898	179° 52' 20"	9° 03' 47"	19.978
39-19	-3428.737	-18970.565	33.428	5.312	-634148.046820	-18213.450944	180° 04' 56"	8° 58' 51"	13.869
R8	-3415.038	-18968.400	19.751	3.121	-374644.868400	-10658.333598	180° 00' 16"	8° 58' 35"	6.127
39-20	-3408.986	-18967.444	25.787	4.061	-489113.478428	-13843.892146	180° 02' 06"	8° 56' 29"	19.977
39-21	-3389.251	-18964.339	39.421	6.310	-747593.207719	-21386.173810	179° 41' 40"	9° 14' 49"	19.945
39-22	-3369.565	-18961.134	39.451	6.293	-748035.697434	-21204.672545	180° 22' 01"	8° 52' 48"	20.004
39-23	-3349.800	-18958.046	39.434	6.259	-747591.585964	-20966.398200	179° 43' 18"	9° 09' 30"	19.923
39-24	-3330.131	-18954.875	39.458	6.324	-747921.457750	-21059.748444	180° 06' 20"	9° 03' 10"	20.038
39-25	-3310.342	-18951.722	39.594	6.331	-750374.480868	-20957.775202	179° 56' 12"	9° 06' 58"	20.058
39-26	-3290.537	-18948.544	30.435	4.847	-576698.936640	-15949.232839	180° 11' 35"	8° 55' 23"	10.760
39-27	-3279.907	-18946.875	12.363	1.906	-234240.215625	-6251.502742	181° 08' 09"	7° 47' 14"	1.749
倍 面 積						18812.311103			
面 積						9406.15			